



National Collaborating Centre
for Determinants of Health

Centre de collaboration nationale
des déterminants de la santé

WEBINAR

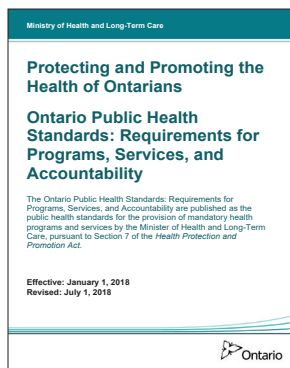
4

PUBLIC HEALTH TRAINING FOR EQUITABLE SYSTEMS CHANGE MOVING UPSTREAM: WORKING ACROSS SECTORS TO DECREASE HEALTH INEQUITIES

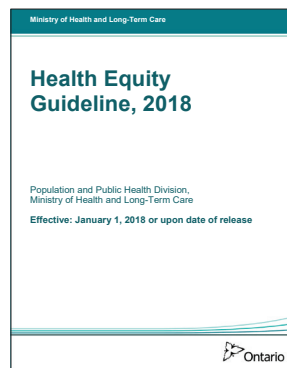
RESOURCES AND REFLECTION QUESTIONS

Thank you for your interest in on-demand webinars from the [Public Health Training for Equitable Systems Change](#) (PHESC) series. To further your learning **BEFORE** and **AFTER** the webinar, we have compiled a list of related readings and reflection questions.

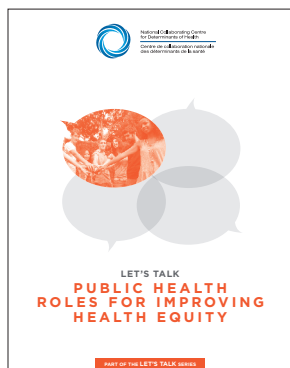
PRE-WEBINAR READINGS



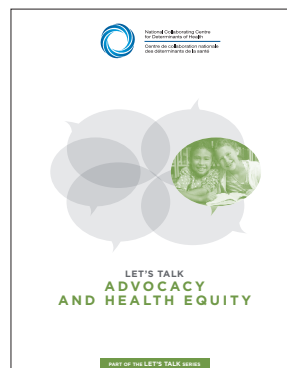
Ontario Ministry of Health and Long-term Care. (2018). *Protecting and Promoting the Health of Ontarians Ontario Public Health Standards: Requirements for Programs, Services, and Accountability*. Toronto, ON, p. 20-22.



Ontario Ministry of Health and Long-term Care. (2018). *Health Equity Guideline, 2018*. Toronto, ON.



National Collaborating Centre for Determinants of Health. (2013). *Let's Talk: Public Health Roles for Improving Health Equity*. Antigonish, NS: National Collaborating Centre for Determinants of Health, St. Francis Xavier University.



National Collaborating Centre for Determinants of Health. (2013). *Let's Talk: Advocacy and Health Equity*. Antigonish, NS: National Collaborating Centre for Determinants of Health, St. Francis Xavier University



National Collaborating Centre for Determinants of Health. (2013). *Let's Talk: Moving Upstream*. Antigonish, NS: National Collaborating Centre for Determinants of Health, St. Francis Xavier University

REGISTER FOR WEBINARS
IN THIS SERIES AT
WWW.NCCDH.CA/PHESC

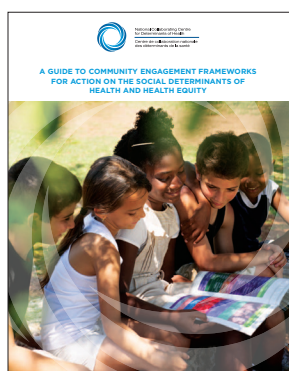
POST-WEBINAR READINGS



National Collaborating Centre for Determinants of Health. (2012). *Bridging the Gap Between Research and Practice: Empower the Community: New Brunswick's Approach to Overcoming Poverty*. Antigonish, NS: National Collaborating Centre for Determinants of Health, St. Francis Xavier University.



National Collaborating Centre for Determinants of Health. (2012). *Assessing the Impact and Effectiveness of Intersectoral Action on the Social Determinants of Health and Health Equity: An Expedited Systematic Review*. Antigonish, NS: National Collaborating Centre for Determinants of Health, St. Francis Xavier University.



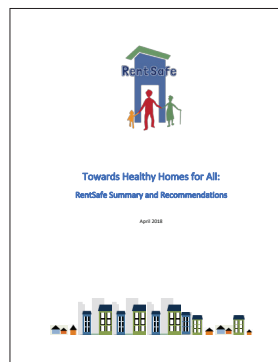
National Collaborating Centre for Determinants of Health (2013). *A Guide to Community Engagement Frameworks for Action on the Social Determinants of Health and Health Equity*. Antigonish, NS: National Collaborating Centre for Determinants of Health, St. Francis Xavier University.



National Collaborating Centre for Determinants of Health. (2014). *Fostering Health Through Healing: Engaging the Community to Create a Poverty Reduction Strategy in Nunavut*. Antigonish, NS: National Collaborating Centre for Determinants of Health, St. Francis Xavier University.



Phipps, E., and the National Collaborating Centre for Determinants of Health. (2018). *Towards Healthy Homes for All: What the RentSafe Findings Mean for Public Health in Canada*. Antigonish, NS: National Collaborating Centre for Determinants of Health, St. Francis Xavier University.



RentSafe. (2018). *Towards Healthy Homes for All: RentSafe Summary and Recommendations*. Ottawa, ON: Canadian Partnership for Children's Health and Environment.

REFLECTION QUESTIONS



1. What opportunities exist within your current role or organization to influence the social determinants of health and health equity (a) within your organization and (b) external to your organization?
2. How do you evaluate community engagement in your organization? What indicators or information do you use to measure success?
3. What are the organizational obstacles to working upstream? How can you shift those obstacles?
4. What initiatives are happening in your community that are focused on the social determinants of health and would benefit from a public health partner?
5. How does your organization currently bring community organizations together to set health equity indicators and targets?
6. How would you characterize your relationships with community partners?
7. What does it look like to engage with communities in an equitable way?
 - a. What are you doing?
 - b. What is happening?
 - c. Who is involved?

PHESC PROJECT PARTNERS



UNIVERSITY OF TORONTO
DALLA LANA SCHOOL OF PUBLIC HEALTH



Alliance for Healthier Communities
Alliance pour des communautés en santé



National Collaborating Centre
for Determinants of Health
Centre de collaboration nationale
des déterminants de la santé



Centre de collaboration nationale
sur les politiques publiques et la santé
National Collaborating Centre
for Healthy Public Policy



National Collaborating Centre
for Methods and Tools
Centre de collaboration nationale
des méthodes et outils



Ontario Public Health Association



advancing urban health