



National Collaborating Centre
for Determinants of Health

Centre de collaboration nationale
des déterminants de la santé

WEBINAR

3

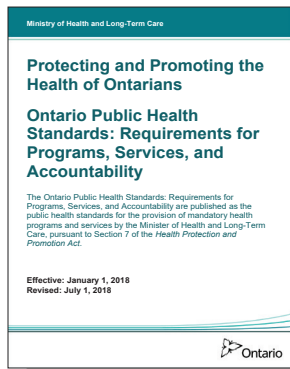
PUBLIC HEALTH TRAINING FOR EQUITABLE SYSTEMS CHANGE

APPROACHES TO DEVELOPING EQUITABLE PUBLIC HEALTH INTERVENTIONS AND STRATEGIES

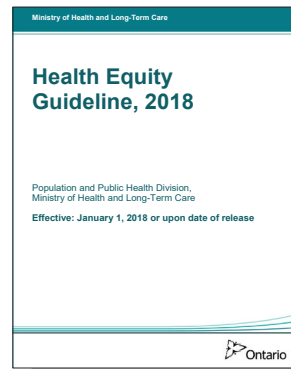
RESOURCES AND REFLECTION QUESTIONS

Thank you for your interest in on-demand webinars from the [Public Health Training for Equitable Systems Change](#) (PHESC) series. To further your learning BEFORE and AFTER the webinar, we have compiled a list of related readings and reflection questions.

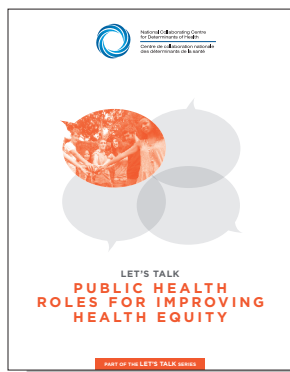
PRE-WEBINAR READINGS



Ontario Ministry of Health and Long-term Care. (2018). *Protecting and Promoting the Health of Ontarians Ontario Public Health Standards: Requirements for Programs, Services, and Accountability*. Toronto, ON, p. 20-22.



Ontario Ministry of Health and Long-term Care. (2018). *Health Equity Guideline, 2018*. Toronto, ON.



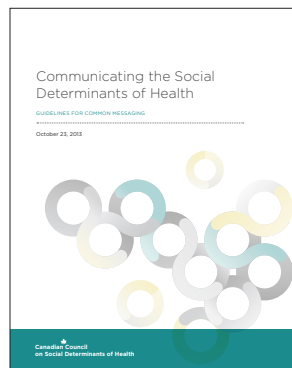
National Collaborating Centre for Determinants of Health. (2013). *Let's Talk: Public Health Roles for Improving Health Equity*. Antigonish, NS: National Collaborating Centre for Determinants of Health, St. Francis Xavier University.



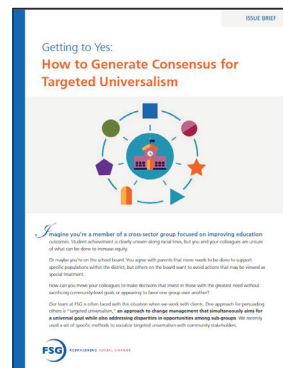
National Collaborating Centre for Determinants of Health. (2013). *Let's Talk: Universal and targeted approaches to health equity*. Antigonish, NS: National Collaborating Centre for Determinants of Health, St. Francis Xavier University

REGISTER FOR WEBINARS
IN THIS SERIES AT
WWW.NCCDH.CA/PHESC

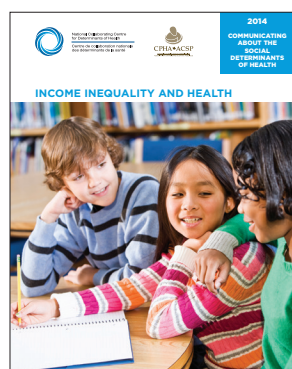
POST-WEBINAR READINGS



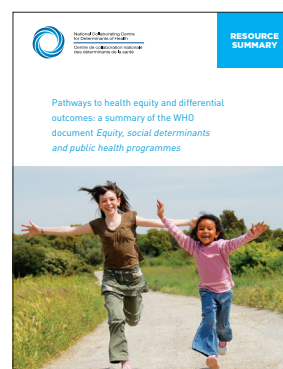
Canadian Council on Social Determinants of Health. (2013). *Communicating the Social Determinants of Health: Guidelines for Common Messaging*. Ottawa, ON: CCSDH.



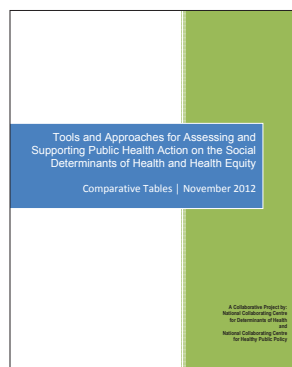
Wright, U., Price, H. & Anidi, E. (2018). *Getting to Yes: How to Generate Consensus for Targeted Universalism*. Washington, DC: FSG Reimaging Social Change



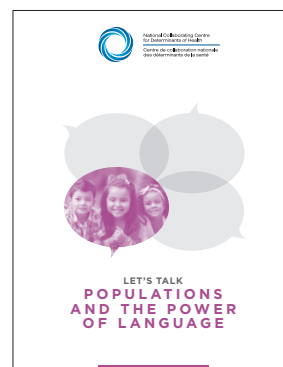
National Collaborating Centre for Determinants of Health and Canadian Public Health Association. (2014). *Communicating the social determinants of health: Income Inequality and Health*. Antigonish, NS: National Collaborating Centre for Determinants of Health, St. Francis Xavier University.



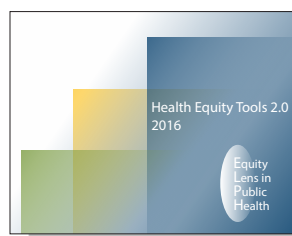
National Collaborating Centre for Determinants of Health. (2015). *Pathways to health equity and differential outcomes: A Summary of the WHO document Equity, social determinants and public health programmes*. Antigonish, NS: National Collaborating Centre for Determinants of Health, St. Francis Xavier University.



National Collaborating Centre for Determinants of Health and National Collaborating Centre for Healthy Public Policy (2012). *Tools and Approaches for Assessing and Supporting Public Health Action on the Social Determinants of Health and Health Equity: Comparative Tables*. Montreal, QC & Antigonish, NS: Mendell, A., Dyck, L., Ndumbe-Eyoh, S., & Morrison, V.



National Collaborating Centre for Determinants of Health. (2014). *Let's Talk: Populations and the Power of Language*. Antigonish, NS: National Collaborating Centre for Determinants of Health, St. Francis Xavier University.



Pauly, B., et al. (2016). *Health Equity Tools 2.0*. Victoria, BC: University of Victoria.

REFLECTION QUESTIONS



1. Are your programs responsive to the needs of communities being impacted by structural disadvantage?
2. Identify a public health initiative in your community.
 - a. What concern was the initiative designed to address?
 - b. Is the approach universal, targeted, targeted universal or proportionate universal?
 - c. How can the initiative be modified to reduce health inequities?
 - d. How will you evaluate the initiative's impact on health equity?
3. Identify a health equity concern in your community.
 - a. What evidence and values underlie this concern?
 - b. Does this concern lend itself to a universal, targeted, targeted universal or proportionate universal approach?
- c. If you were to design an intervention to address this concern, where would you start? What evidence or tools would you gather to help you develop an intervention? What community assets can you draw on to inform the initiative?
4. What language do you use to describe communities experiencing health inequities?
5. Does the language you use place the need for change on communities or on policies and structures?
6. What are the benefits, drawbacks and power dynamics of your language?
7. How does your language change when you are in different settings (e.g., health department, school, municipal office)? Is this appropriate?

PHESC PROJECT PARTNERS



UNIVERSITY OF TORONTO
DALLA LANA SCHOOL OF PUBLIC HEALTH



Alliance for Healthier Communities
Alliance pour des communautés en santé



National Collaborating Centre
for Determinants of Health
Centre de collaboration nationale
des déterminants de la santé



Centre de collaboration nationale
sur les politiques publiques et la santé
National Collaborating Centre
for Healthy Public Policy



National Collaborating Centre
for Methods and Tools
Centre de collaboration nationale
des méthodes et outils



OPIA
Ontario Public Health Association



Public Health
Ontario



Santé
publique
Ontario



Wellesley
Institute
advancing urban health