



National Collaborating Centre
for Determinants of Health

Centre de collaboration nationale
des déterminants de la santé

WEBINAR

2

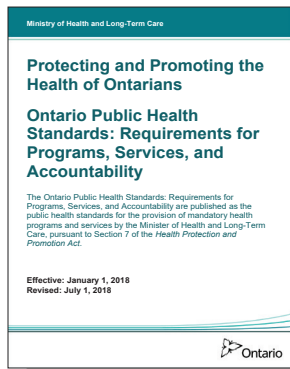
PUBLIC HEALTH TRAINING FOR EQUITABLE SYSTEMS CHANGE

ASSESSING AND REPORTING ON HEALTH INEQUITIES

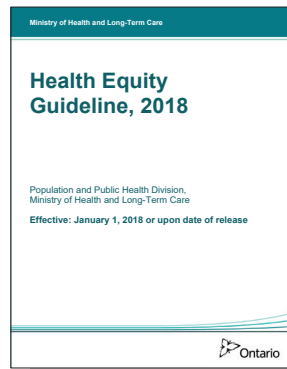
RESOURCES AND REFLECTION QUESTIONS

Thank you for your interest in on-demand webinars from the [Public Health Training for Equitable Systems Change](#) (PHESC) series. To further your learning BEFORE and AFTER the webinar, we have compiled a list of related readings and reflection questions.

PRE-WEBINAR READINGS



Ontario Ministry of Health and Long-term Care. (2018). *Protecting and Promoting the Health of Ontarians Ontario Public Health Standards: Requirements for Programs, Services, and Accountability*. Toronto, ON.



Ontario Ministry of Health and Long-term Care. (2018). *Health Equity Guideline, 2018*. Toronto, ON.



National Collaborating Centre for Determinants of Health. (2013). *Let's Talk: Public Health Roles for Improving Health Equity*. Antigonish, NS: National Collaborating Centre for Determinants of Health, St. Francis Xavier University.



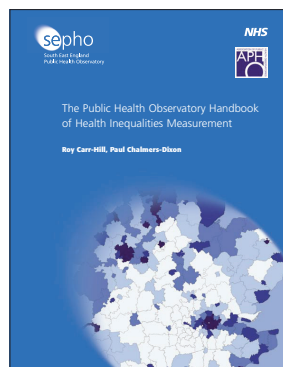
National Collaborating Centre for Determinants of Health. (2014). *Glossary of Essential Health Equity Terms*. Antigonish, NS: National Collaborating Centre for Determinants of Health, St. Francis Xavier University.

REGISTER FOR WEBINARS
IN THIS SERIES AT
WWW.NCCDH.CA/PHESC

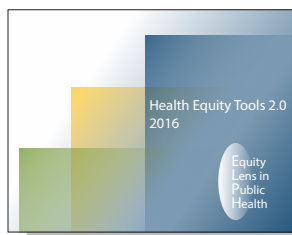
POST-WEBINAR READINGS



National Collaborating Centre for Determinants of Health. (2015). *Equity-Integrated Population Health Status Reporting: Action Framework*. Antigonish, NS: National Collaborating Centre for Determinants of Health, St. Francis Xavier University.



Carr-Hill, R. & Chalmers-Dixon, P. (2005). *The Public Health Observatory Handbook of Health Inequalities Measurement*. Oxford, UK: South East Public Health Observatory.



Pauly, B., et al. (2016). *Health Equity Tools 2.0*. Victoria, BC: University of Victoria.



Canadian Institute for Health Information. (2018). *Measuring Health Inequalities: A Toolkit*. Retrieved from: www.cihi.ca/en/measuring-health-inequalities-a-toolkit

REFLECTION QUESTIONS



1. What components of assessing and reporting do you incorporate into your daily practice?
2. How is data usually collected, analyzed and reported?
3. What data do you have available in your organization or program that can be disaggregated?
4. What data are you missing?
5. What do you need to change to enhance your assessment and reporting practices?
6. Who can you partner with to enhance data on the social determinants of health and health equity in your community?
7. How do you communicate data and information on health equity to the public and partners?
8. What do you do to make sure the data that you report to the public is accessible and understood by all in your community?
9. How can the data be used to develop programs and policies to improve health equity?

PHESC PROJECT PARTNERS



UNIVERSITY OF TORONTO
DALLA LANA SCHOOL OF PUBLIC HEALTH



Alliance for Healthier Communities
Alliance pour des communautés en santé



National Collaborating Centre
for Determinants of Health
Centre de collaboration nationale
des déterminants de la santé



Centre de collaboration nationale
sur les politiques publiques et la santé
National Collaborating Centre
for Healthy Public Policy



National Collaborating Centre
for Methods and Tools
Centre de collaboration nationale
des méthodes et outils



Ontario Public Health Association



advancing urban health